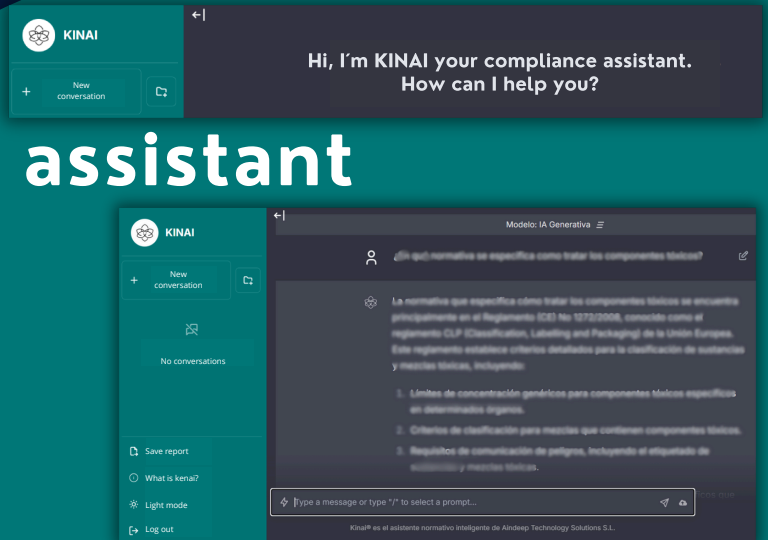




KINAI

Your generative AI assistant for regulatory compliance

Send a message



¿What is KINAI?

It is a generative AI assistant designed to optimize regulatory compliance. It generates answers and recommends actions aligned with the activities of each sector.

OPERATIONAL QUALITIES

Normative domain



Process large legal and regulatory volumes

Accuracy informative



Curation and delivery of relevant data for each type of inquiry

Inconsistency detection



Analyzes documentation submitted, detecting regulatory errors and omissions.

Risk assessment



Develop automated recommendations for better decisions

ADAPTABLE TO MORE THAN 250,000 LEGAL, TECHNICAL OR ADMINISTRATIVE STANDARDS, AVOIDING NON-COMPLIANCE FINES AND REPUTATIONAL CRISES



Interaction intelligent via chat

You can make queries, providing accurate and contextualized answers in real time



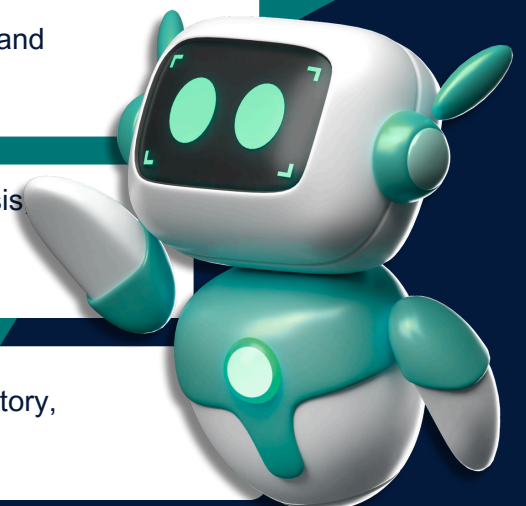
Automated document analysis

Allows you to upload documents for analysis identifying risks and opportunities for improvement.



Management customized of users

Secure log-in and traceable interaction history, allows access to previous queries



What makes KINAI unique?



Internet isolated assistant

It has an exclusive repository, designed for each sector.



Updating resources

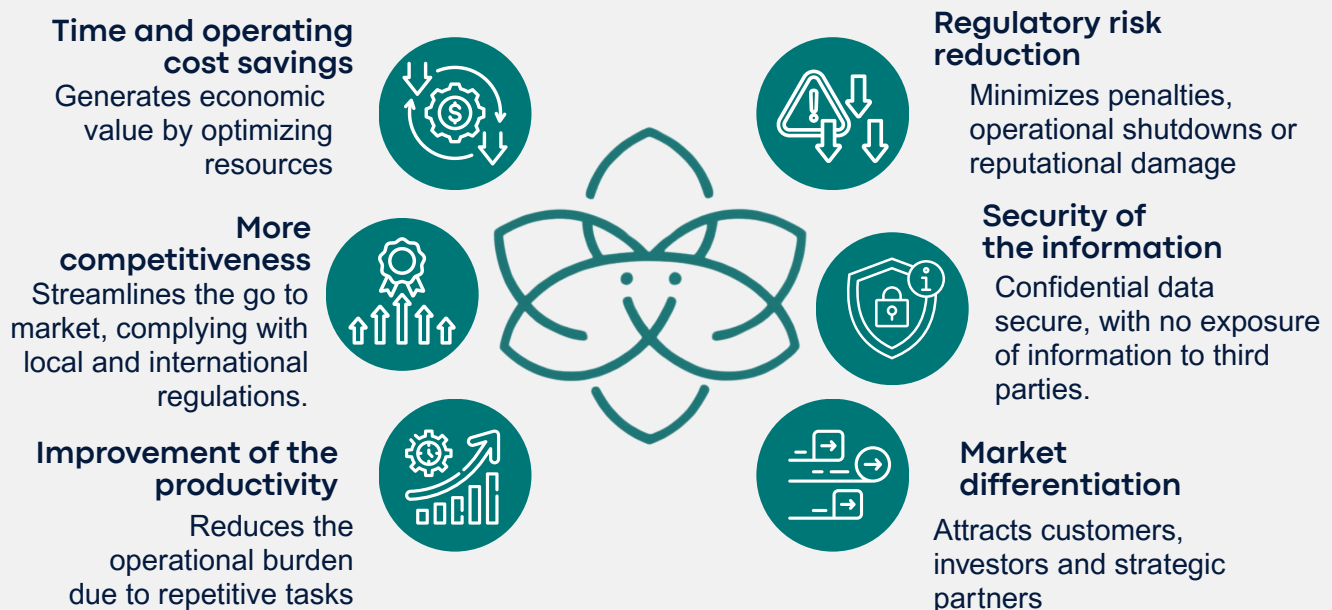
Keeps regulatory information always up to date



Natural language interpretation

Interprets queries and responds in a clear and understandable manner.

Why is it a good choice?



KINAI

THINKING WITH YOU. WORKING FOR YOU.

KINAI belongs to our **KISAI** line of Generative AI intelligent assistants. It is designed to transform and optimize the processes and decisions of organizations and can be adapted to different sectors of activity.

powered by  **aindeep**

We are a company specialized in cloud services that integrates AI and cybersecurity to offer intelligent assistants capable of automating critical processes, strengthening governance and ensuring regulatory compliance.

